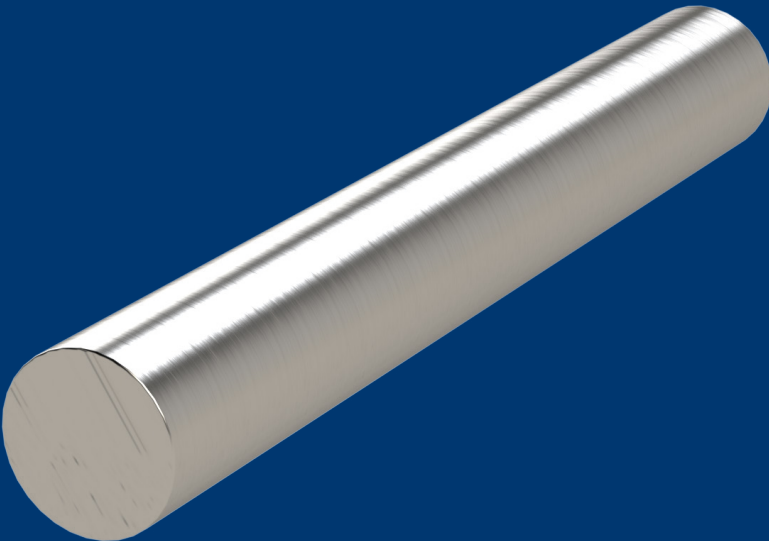


DATA SHEET

SIHARD^{...}

2358



W.NR.: 1.2358

EN / DIN: 60CrMoV18-5

AISI: /

CHEMICAL COMPOSITION

C	Si	Mn	Cr	Mo	V
0.60	0.35	0.80	4.50	0.50	0.25

ULTRASOUND EXAMINATION

EN 10228-3 art.2-4

DELIVERY CONDITION

quenched and tempered at 280-325 HB

PROCESS

conventional

HEAT TREATMENT

soft annealing	cooling	hardness (HB)
820-860 °C	furnace	<240
hardening	quenching	hardness (HRC)
950-980 °C	oil, air, thermal bath 500-550 ° C	62

PROPERTIES

Medium-alloy steel for cold applications. Normally delivered in quenched and tempered condition. This steel is known for its good shock and abrasion resistance. Possibility of surface hardening through induction or by flame. Dimensional stability. Can be polished and used in welding.

APPLICATION

Tool steel for cold applications. Cutting inserts, stencils for segment cutting. Tools for bending and reforming. Moulds for all kinds of plastics (including abrasive).

DISCLAIMER

The information and data presented herein are typical or average values and are not a guarantee of maximum or minimum values. Applications specifically suggested for material described herein are made solely for the purpose of illustration to enable the reader to make his own evaluation and are not intended as warranties, either express or implied, of fitness for these or other purposes. There is no representation that the recipient of this literature will receive updated editions as they become available.