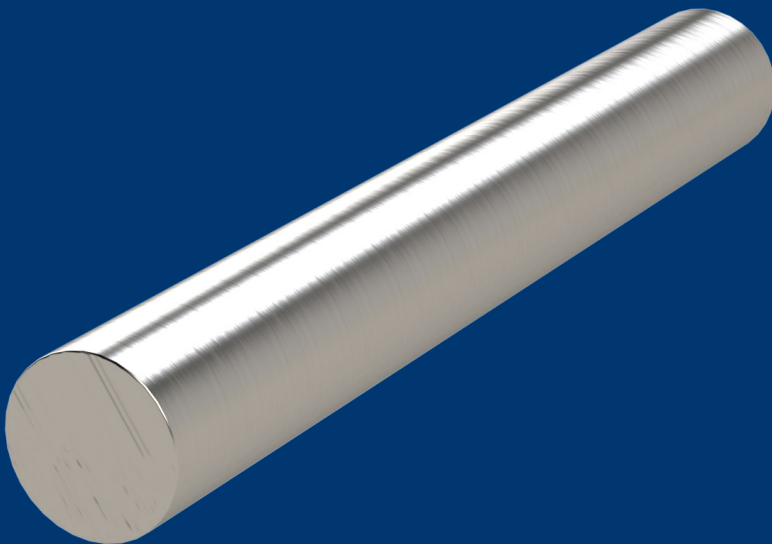


DATA SHEET

SIHARD™

2842



W.NR.: 1.2842 (EN ISO 4957)

EN / DIN: 90MnCrV8

AISI: ~ O2

CHEMICAL COMPOSITION

C	Si	Mn	Cr	V
0.90	0.25	2.00	0.35	0.10

ULTRASOUND EXAMINATION

EN 10228-3 art.2-4

DELIVERY CONDITION

soft annealed with a hardness of <229 HB

PROCESS

conventional

HEAT TREATMENT

soft annealing	cooling	hardness (HB)
690-720 °C	furnace	<229
hardening	quenching	hardness (HRC)
790-820 °C	oil, warm bath 180-220 ° C	63-65

PROPERTIES

Steel with good dimensional stability during heat treatment. High resistance to cracking. Medium toughness and wear resistance. Good workability in the soft annealed condition.

APPLICATION

Measuring tools, blades for woodworking, paper. For cutting and stamping thin sheet metal (up to 6 mm thick). For complex dies and punches needing high dimensional stability after heat treatment. Blades for flat and circular shears for paper and plastics. For tapping. Can also be used for drawing and bending thin sheet metals. Small moulds or inserts for plastics and rubber. Can also be used for the compression of powders at small loads. Also for pegs. Usual working hardness of between 57 and 62 HRC.

