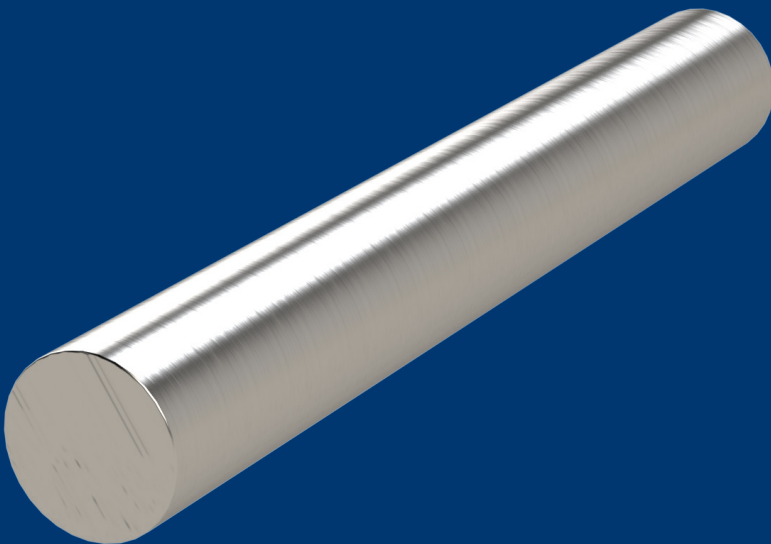


DATA SHEET

SITHERM^{...}

2343R



W.NR.: 1.2343 ESR (EN ISO 4957)

EN / DIN: X37CrMoV5-1

AISI: H11

CHEMICAL COMPOSITION

C	Si	Mn	Cr	Mo	V
0.38	1.00	0.40	5.10	1.25	0.40

ULTRASOUND EXAMINATION

EN 10228-3 art.2-4, SEP1921 E/e

DELIVERY CONDITION

soft annealed with a hardness of <229 HB

PROCESS

electro slag remelted - ESR

HEAT TREATMENT

soft annealing	cooling	hardness (HB)
800-840 °C	furnace	<229
hardening	quenching	hardness (HRC)
1000-1040 °C	air, oil, warm bath 500-550 °C	50-56

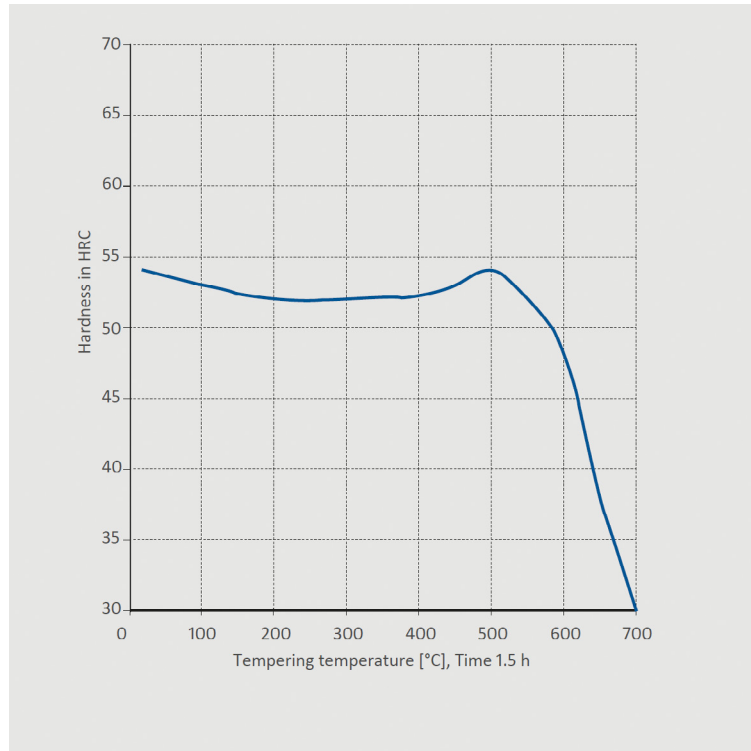
PROPERTIES

High tempering resistance and toughness in hot applications. The toughness of this steel is slightly greater than that of SITHERM 2344R. Water-cooling during operation may also be used. Since the steel is an ESR-steel, it is recommended for the most demanding processes (where significant temperature shocks exist). Can be nitrated.

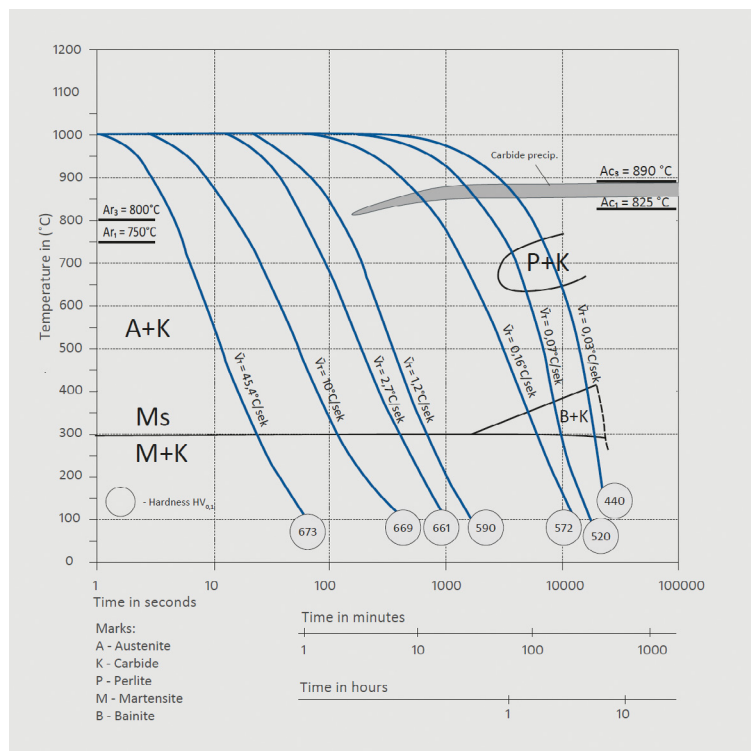
APPLICATION

For tools for the die casting of aluminium and zinc, for die forging and aluminium extrusion: pressure plates, pistons, recipients, die holders. For plastics processing with the option to polish. Blades for shredding waste rubber. Usual working hardness of between 42 and 48 HRC.

TT



CCT



DISCLAIMER

The information and data presented herein are typical or average values and are not a guarantee of maximum or minimum values. Applications specifically suggested for material described herein are made solely for the purpose of illustration to enable the reader to make his own evaluation and are not intended as warranties, either express or implied, of fitness for these or other purposes. There is no representation that the recipient of this literature will receive updated editions as they become available.