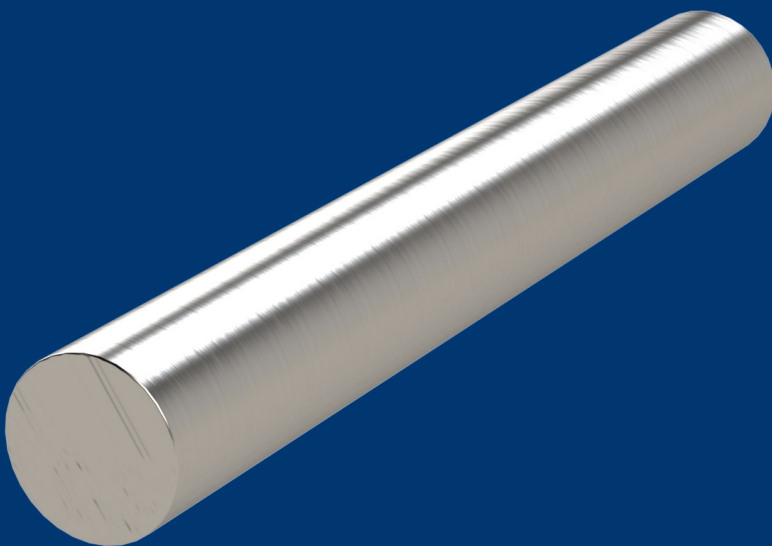


DATA SHEET

SITHERM^{...}

2365



W.NR.: 1.2365 (EN ISO 4957)

EN / DIN: 32CrMoV12-28

AISI: ~ H10

CHEMICAL COMPOSITION

C	Si	Mn	Cr	Mo	V
0.32	0.25	0.30	2.95	2.80	0.55

ULTRASOUND EXAMINATION

EN 10228-3 art.2-4

DELIVERY CONDITION

soft annealed with a hardness of <229 HB

PROCESS

conventional

HEAT TREATMENT

soft annealing	cooling	hardness (HB)
780-810 °C	furnace	<229
hardening	quenching	hardness (HRC)
1010-1050 °C	air, oil, warm bath 450-550 °C	52-56

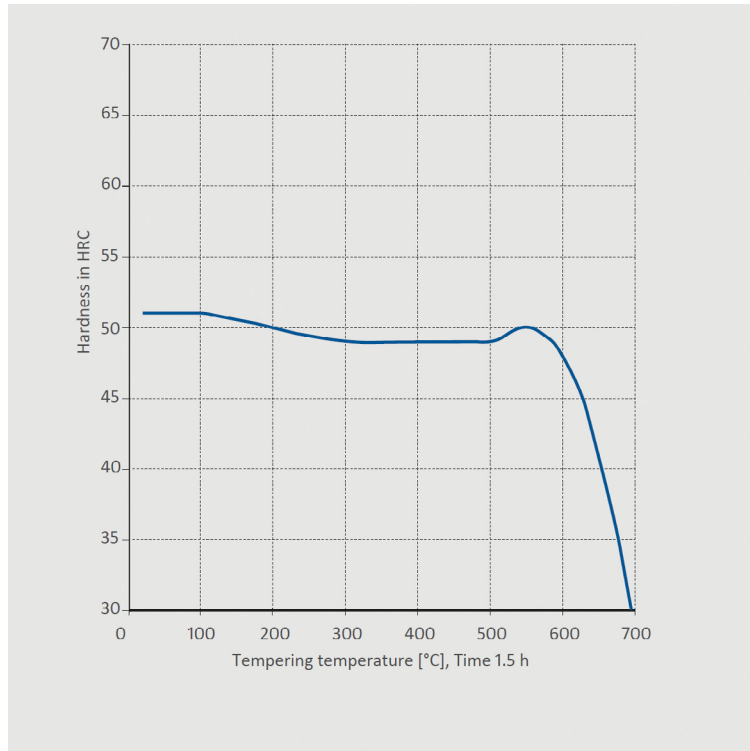
PROPERTIES

Very good wear and tempering resistance at high temperatures typical for working with aluminium. Water-cooling during operation may also be used. It can be nitrated.

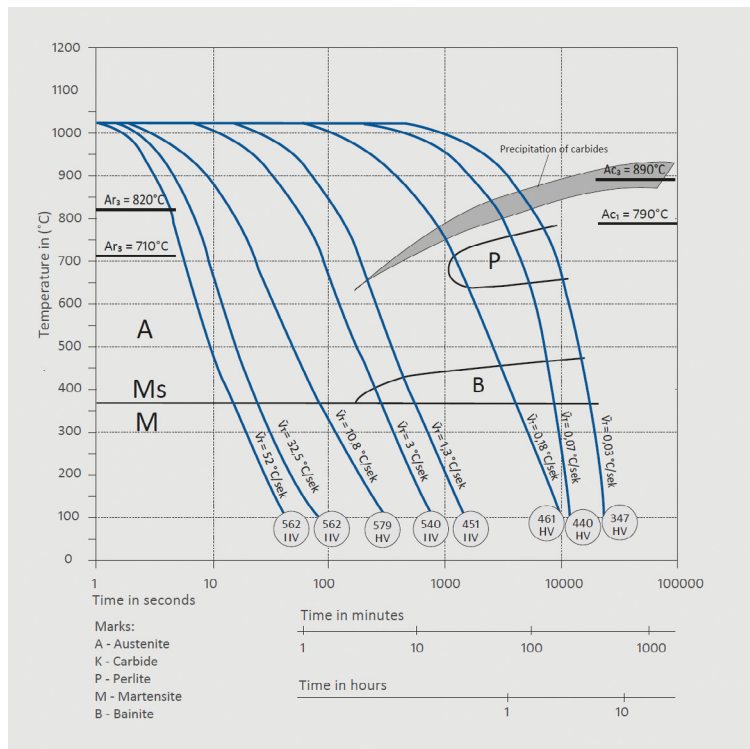
APPLICATION

Various dies, inserts, jigs, pressure plates for the extrusion of aluminium, copper and steel. For the die-casting of aluminium and copper. Various recipients. Tools for forging machines (matrices, pins) for copper. Tools for making screws, nuts and rivets. Also for the cold forming of plastics, hobing. Usual working hardness of between 38 and 50 HRC.

TT



CCT



DISCLAIMER

The information and data presented herein are typical or average values and are not a guarantee of maximum or minimum values. Applications specifically suggested for material described herein are made solely for the purpose of illustration to enable the reader to make his own evaluation and are not intended as warranties, either express or implied, of fitness for these or other purposes. There is no representation that the recipient of this literature will receive updated editions as they become available.