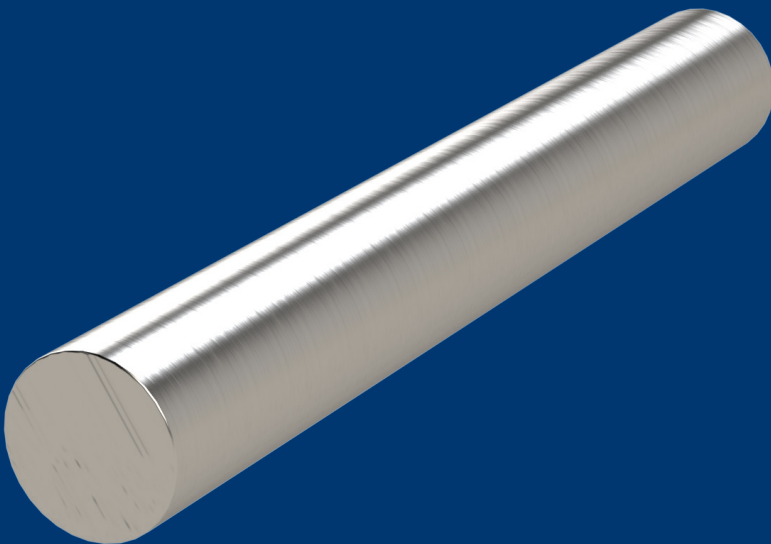


DATA SHEET

SITHERM^{...}

2367R



W.NR.: 1.2367 ESR (EN ISO 4957)

EN / DIN: X38CrMoV5-3

AISI: /

CHEMICAL COMPOSITION

C	Si	Mn	Cr	Mo	V
0.38	0.40	0.40	5.00	3.00	0.55

ULTRASOUND EXAMINATION

EN 10228-3 art.2-4

DELIVERY CONDITION

soft annealed with a hardness of <235 HB

PROCESS

electro slag remelted - ESR

HEAT TREATMENT

soft annealing	cooling	hardness (HB)
800-840 °C	furnace	<235
hardening	quenching	hardness (HRC)
1030-1080 °C	air, oil, warm bath 500-550 ° C	53-57

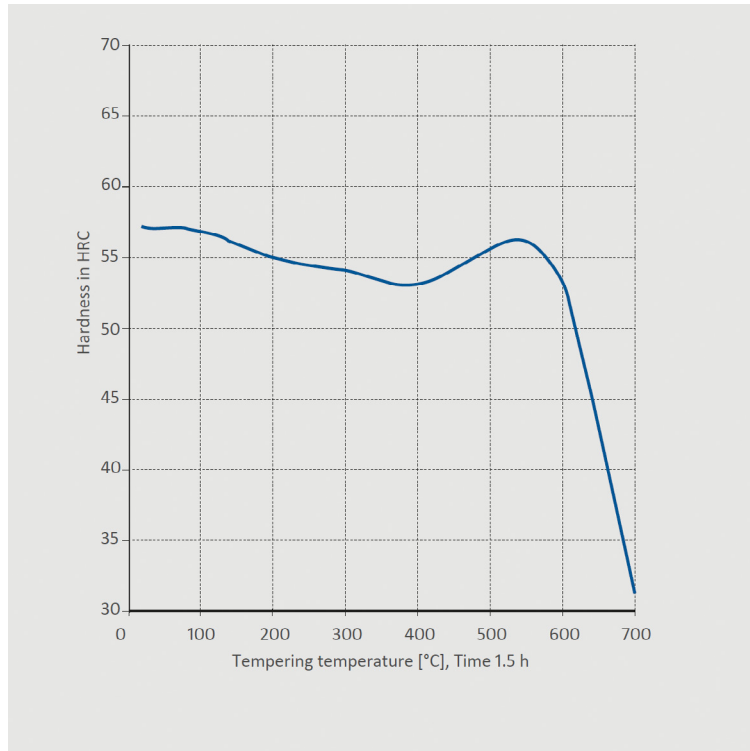
PROPERTIES

Very good tempering resistance and toughness. High strength in hot applications. Better impact strength compared to SITHERM 2343R and SITHERM 2344R. For the general processing of light alloys. Water-cooling during operation may also be used. It can be nitrated.

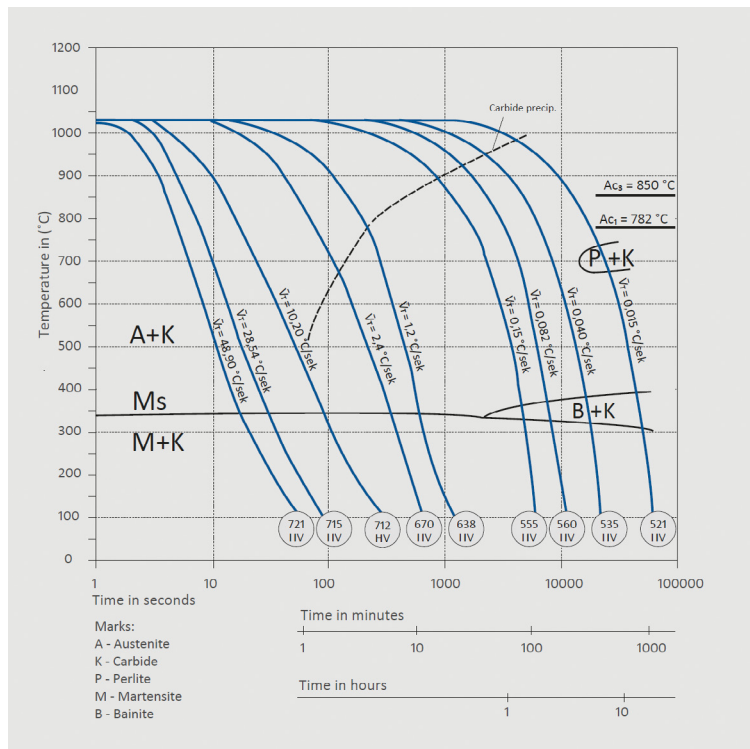
APPLICATION

Tools for die casting, such as cores and core pushers for aluminium, large tools for pressing, drop cartridges for presses, and blades. Tools for extrusion of aluminium and copper (inner sleeves). Usual working hardness of between 42 and 50 HRC.

TT



CCT



DISCLAIMER

The information and data presented herein are typical or average values and are not a guarantee of maximum or minimum values. Applications specifically suggested for material described herein are made solely for the purpose of illustration to enable the reader to make his own evaluation and are not intended as warranties, either express or implied, of fitness for these or other purposes. There is no representation that the recipient of this literature will receive updated editions as they become available.